

An Effective Approach to Detect Lesions in Color Retinal Images¹

Huan Wang, Wynne Hsu, Kheng Guan Goh, Mong Li Lee
School of Computing
National University of Singapore
{wangh, whsu, gohkg, leeml} @comp.nus.edu.sg

Abstract

Diabetic-related eye diseases are the most common cause of blindness in the world. So far the most effective treatment for these eye diseases is early detection through regular screenings. To lower the cost of such screenings, we employ state-of-the-art image processing techniques to automatically detect the presence of abnormalities in the retinal images obtained during the screenings. In this paper, we focus on one of the abnormal signs: the presence of exudates/lesions in the retinal images. We propose a novel approach that combines brightness adjustment procedure with statistical classification method and local-window-based verification strategy. Experimental results indicate that we are able to achieve 100% accuracy in terms of identifying all the retinal images with exudates while maintaining a 70% accuracy in correctly classifying the truly normal retinal images as normal. This translates to a huge amount of savings in terms of the number of retinal images that need to be manually reviewed by the medical professionals each year.

1. Introduction

Diabetic-related eye diseases are the most common cause of blindness in the world. For example, there are approximately 16 million Americans who have either Type I (juvenile onset) or Type II (adult onset) diabetes. All are at risk of developing sight-threatening eye diseases that are common complications of diabetes. In Singapore, more than half of all newly registered blindness are caused by retinal diseases, and diabetic retinopathy is one of the main contributors [1].

¹This project is funded by research funds PS964770 and RP991613.

So far the most effective treatment for these eye diseases is early detection through regular screenings. During the screenings, color retinal images are obtained using fundus camera. However, this results in a large number of fundus images being produced that require manual analysis and diagnosis. In other words, medical professionals have to spend a great deal of time and energy to review these photographs. It would be more cost effective if the initial task of analyzing the retinal photographs can be automated so that only the abnormal retinal images need to be reviewed by the medical professionals each year.

With this motivation in mind, we have developed a system to automate the preliminary analysis and diagnosis of retinal eye images. This system combines digital image processing and pattern recognition with machine learning techniques to analyze diabetic retinal images. Through this system, the retinal images will be classified into normal or abnormal ones. Figure 1 shows an example of a healthy fundus image.

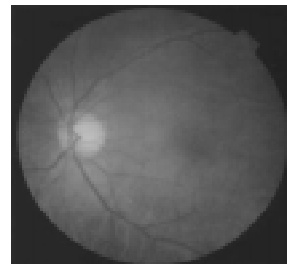


Figure 1. Healthy normal retinal image.

An unhealthy abnormal fundus images usually exhibit some abnormalities, one of which is the presence of exudates/lesions. Exudates/lesions are typically manifested as random whitish/yellowish patches of varying sizes, shapes and locations. In this paper, we

focus on how to detect the presence of retinal lesions accurately using a novel approach that combines brightness adjustment procedure with statistical classification method and local-feature-based verification strategy. Experiments have been carried out on 154 images (54 abnormal images, 100 normal images). The results indicate that our approach is able to achieve 100% accuracy in terms of identifying the all the retinal images with exudates while maintaining a 70% accuracy in correctly classifying the truly normal retinal images as normal.

1.1 Related Work

Current research has demonstrated that features such as size, shape, texture and orientation, etc. are not sufficient to identify lesions in retinal images [2]. On the other hand, color information has shown to be effective for lesions detection under certain conditions. If the background color of a good quality retinal image is sufficiently uniform (e.g. reddish or dark reddish), then a simple and effective method to separate hard lesions from such background can be easily applied by selecting a proper threshold [3,4]. Furthermore, some dynamic thresholding algorithms containing the compensation of irregularities of illumination were also proposed to detect exudates in different surroundings [2, 5]. However, the limitation of these thresholding techniques is that they typically only work well for the training images, but once an unseen image comes along, they may not be able to accurately detect the exudates. This is because the processing steps require different threshold parameters for different types of retinal images and need user's intervention on a case by case basis. As a result, these thresholding-based algorithms are not scalable for analyzing large number of retinal images.

In contrast, we develop a simple but effective method, based on statistical classification [6, 7], to identify lesions in retinal images.

2. Exudates Detection Using Statistical Classification

Objects in an image usually can be described in terms of some features f_1, f_2, \dots, f_k such as color, size, shape, texture and other more complex characteristics. These features, f_1, f_2, \dots, f_k form a k-dimensional feature space, \mathbf{F} . Ideally, we would like to find a space \mathbf{F} such that different objects map to different, non-intersecting clusters in this feature space. If this condition is satisfied, we can easily identify different objects and classify them into corresponding classes (clusters) by certain rules. Suppose we have N different objects/classes to be identified in an image. Let $\mathbf{C}_i(f_{i1}, f_{i2}, \dots, f_{ik})$ denote the

center of class i (cluster i) in the k-dimensional feature space \mathbf{F} , where $i=1, 2, \dots, N$. Let $\mathbf{X}(x_1, x_2, \dots, x_k)$ be the unknown object's feature measurement values in \mathbf{F} . Let $D_i(\mathbf{X})$, $i=1, 2, \dots, N$, be the discriminant function that is used to determine whether \mathbf{X} should be classified as belonging to class i .

Given a specified pixel x with feature vector \mathbf{X} , we classify pixel x as belonging to class i if $D_i(\mathbf{X})$ is the maximum along all $D_j(\mathbf{X})$, where $j=1, 2, \dots, N$ and $j \neq i$.

Two issues need to be resolved before we can apply the above statistical classification to the detection of lesions. The first issue is the selection of a suitable feature space so that exudates and other similar retinal lesions can have clearly distinct characteristics from other objects and background. The second issue is to derive an appropriate discriminant function $D(\mathbf{X})$ that classifies each pixel in a retinal image into class "lesions" or class "others".

In our initial investigation, we use only color features as our feature space, \mathbf{F} . The color fundus retinal image consists of three planes—red, green and blue, each plane with 256 levels of intensity denoted as (R, G, B). Color can be also represented by θ , ϕ and L in the spherical-coordinates [8]. The relation between the two color spaces is expressed below:

$$L = (R^2 + G^2 + B^2)^{1/2}$$

$$\theta = \text{Arctan}(G/R)$$

$$\phi = \text{Arccos}(B/L)$$

L denotes the exposure or brightness of an image, whereas θ , ϕ emphasize the differences or changes of colors. When L is held constant, θ and ϕ describe the chromaticity in an isoilluminant surface. Michael Coldbaum *et al.* mentioned in [9,10] that a "quadratic discriminant function" might be applied to distinguish three types of yellow lesions (exudates, cotton-wool spots and drusens) using only two color features θ and ϕ . Since our focus is to differentiate between yellowish lesions and other darker objects in the color retinal images, we need to include both the brightness/exposure of the image as well as the changes of color information. Hence, we have selected L, θ , ϕ as our feature space, $\mathbf{F}(f_L, f_\theta, f_\phi)$.

Next, we need to derive an appropriate discriminant function. Our discriminant $D(\mathbf{X})$ is derived from Bayes rule.

Let $P(\mathbf{C}_i/\mathbf{X})$ be the posterior probability. It denotes the probability of measurement vector \mathbf{X} belonging to event i (class i). If $P(\mathbf{C}_i/\mathbf{X})$ is greater than $P(\mathbf{C}_j/\mathbf{X})$, where $j=1, 2, \dots, N$, and $j \neq i$, then we should conclude that \mathbf{X} belongs to event i (class i). According to Bayes' theory, $P(\mathbf{C}_i/\mathbf{X})$ can be expressed as:

$$P(\mathbf{C}_i/\mathbf{X}) = P(\mathbf{C}_i)P(\mathbf{X}/\mathbf{C}_i)/P(\mathbf{X}) \quad (1)$$

Here, $P(C_i)$ is the priori probability of class i in the image to be classified. $P(\mathbf{X}/C_i)$ is the conditional probability of \mathbf{X} given class C_i . In other words, the discriminant factor can be defined as a posterior probability:

$$D_i(\mathbf{X})=P(C_i/\mathbf{X})=P(C_i)P(\mathbf{X}/C_i)/P(\mathbf{X}) \quad (2)$$

Since $P(\mathbf{X})$ is independent of any class, it will not affect the discriminating power of $D_i(\mathbf{X})$, so it can be safely ignored/discarded. Then, it is reasonable to approximate $P(\mathbf{X}/C_i)$ to a normal distribution:

$$P(\mathbf{X}/C_i)=\frac{1}{|\Sigma_i|^{1/2}\sqrt{2\pi}}\exp\left(-\frac{(\mathbf{X}-C_i)^T\Sigma_i^{-1}(\mathbf{X}-C_i)}{2}\right) \quad (3)$$

Finally we further assume that the covariance matrix

$$D_i(\mathbf{X})=-(\mathbf{X}-C_i)^T(\mathbf{X}-C_i) \quad (4)$$

Σ_i ($i=1,2,\dots,N$) in (3) is almost identity for all classes and that $P(C_i)$ is almost equally likely for $i=1, 2, \dots,N$. Applying logarithmic operator to formula (2), we obtain the following:

Ignoring the negative sign in (4), we obtain (5) which

$$D_i(\mathbf{X})=(\mathbf{X}-C_i)^T(\mathbf{X}-C_i) \quad (5)$$

is also called the “minimum distance discriminant (MDD).”

Applying $D_i(\mathbf{X})$ as defined in (5) to the problem of detecting presence of exudates in retinal images, we now define only two classes—yellowish patches (lesions) and reddish/dark reddish background. The feature centers of lesions and background, $C_{lesion}(f_L, f_\theta, f_\phi)$ and $C_{bkgrnd}(f_L, f_\theta, f_\phi)$, can be obtained and trained by selecting small windows inside exudates patches and background regions respectively in a set of typical sample images. The means of exudates and background are then computed and stored as feature centers for the two classes respectively.

For each pixel $\mathbf{X}(x_L, x_\theta, x_\phi)$ from the retinal image, the discriminant $D_{lesion}(\mathbf{X})$ and $D_{bkgrnd}(\mathbf{X})$ are calculated. If $D_{lesion}(\mathbf{X})$ is less than $D_{bkgrnd}(\mathbf{X})$, then pixel \mathbf{X} is classified as lesion otherwise it is being classified as background. In this way, exudates or other yellowish lesions can be quickly detected. Our simple and fast algorithm is able to achieve good accuracy in the detection of exudates in color fundus images. Figure 2 shows an example of output from the algorithm.

From Figure 2, we see that though our classifier detects the lesion regions correctly, it mis-classifies the optic disc region (a spherical region that appears brighter than the rest of the choroids) due to its similar color to exudates/lesions. With regard to this, we have developed

separate algorithms to automatically identify and label the optic disc regions in retinal images [11]. Once the optic disc regions have been identified, they will be excluded so that they cannot interfere with the detection of exudates/lesions.

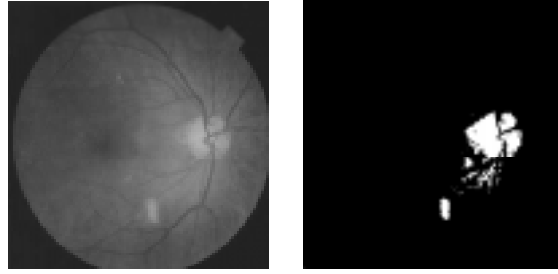


Figure 2. (Left) original color retinal image containing yellowish lesion. (Right) classified image by MDD (white points: lesions, black points: background).

3. Adjustment for Non-uniformity of Illumination

Though the minimum distance discriminant function approach seems to work well for images under the same illumination conditions, in practice, we find a large variance among the images obtained. This variation is due to a number of factors, such as the intrinsic attribute of lesions, decreasing color saturation at the lesion boundary or lighting variation over an image, etc. As a result, the color of lesion patches in some regions of an image may appear dimmer than the background color that is located in another region. Under such circumstances, these lesions would be wrongly classified as “background” instead of “lesion” by MDD classifier. Controlling the external lighting condition is not realistic at present since the images are taken from a number of government-owned clinics scattered in different parts of the country. Adjusting the brightness of various input images to a common proper range is therefore an issue that must be properly resolved before the retinal images can be accurately classified. In particular, we must handle the non-uniformity of illumination mainly due to reflection. This is manifested by the rise of intensity (brightness) levels in some regions of an image, while other regions farther away from the optic disc may suffer from a reduction of brightness. Exudates or the similar lesions in such regions then would appear dim and are not distinguishable from the background color near the disc. To remedy this phenomenon, we perform a brightness adjustment procedure. In this procedure, only the darker regions have their brightness enhanced. Those regularly illuminated regions remain unchanged by this adjustment procedure. This is achieved using a brightness transform function as shown below:

$$y = \beta * x^\alpha$$

where x is the pixel value of the original input image, y is the pixel value after brightness adjustment, and $0 \leq \alpha \leq 1$, $\beta = inmax^{1-\alpha}$, $inmax$ is value of upper limit intensity (brightness) of input image desired in transform function, $0 \leq inmax \leq 255$.

By properly selecting the parameter α and $inmax$, we are able to achieve the curve property demonstrated in Figure 3.

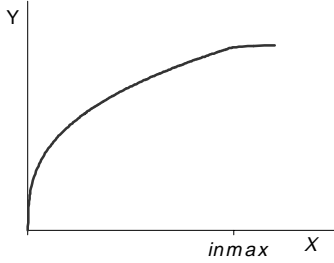


Figure 3. Expected function for brightness adjustment.

Applying this brightness adjustment procedure to the color retinal images, we are able to detect even those dim lesions that are distributed in the darker regions using our Bayes MDD classifier (see Figure 4).

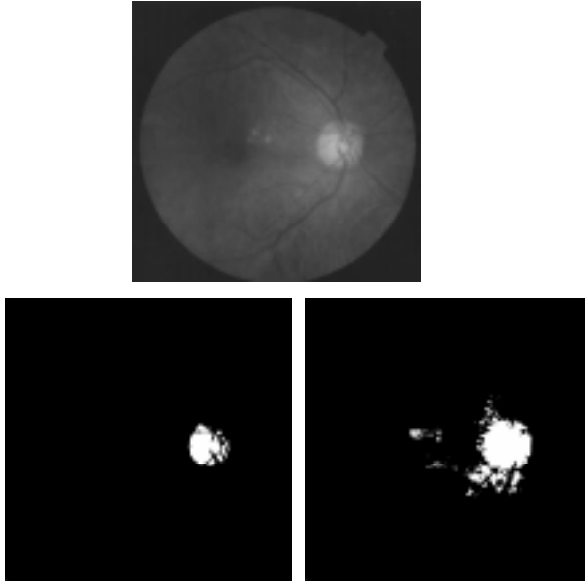


Figure 4. (Top) Original image containing small dim lesions. (Bottom Left) MDD classification map without prior brightness adjustment. Dim lesions are missed. (Bottom Right) Classification map of brightness adjusted retinal image. Dim lesions can be detected.

4. Verification of Presence of Lesions

While the brightness adjustment function enhances the brightness of lesion patches that are scattered in the darker color retinal images or some darker regions of images, it also enhances the brightness of some background pixels so that these pixels would now be wrongly identified as class “lesion”. To keep this error rate to a minimum, we need to verify the MDD classification output so that only the true lesion information is retained while the false lesion points (pixels) are rejected. One observation about the false lesion points is that these points typically belong to a larger area where the color (or brightness) distribution gradually changes from brighter to darker without distinct edge boundary. However, for exudates, there is always a distinct edge or boundary caused by obvious color changes between the lesion pixels and its immediate surroundings. By analyzing the color changes within a small local neighborhood, we are able to verify whether the white pixel(lesion pixel) in MDD classification map is indeed a true or false lesion pixel.

Consider a small sub-image that is either completely inside or completely outside the yellowish lesion patch. Generally, within such a local sub-image, color is uniform without sudden changes. But in a sub-image that contains both lesion patch and background, there is always a significant contrast between the high intensity lesion pixels and the low intensity background pixels. Based on this observation, we perform a second pass through the image using a $M \times M$ local window to distinguish whether there are true lesion points within this local window.

First, we apply an initial smoothing step (taking a $N \times N$ local average, e.g. $N = 3, 5$ or 7) to reduce and suppress the interference of scattered noise points in the original image. Next, the whole original retinal image is scanned, pixels by pixels. For each pixel x that was already classified as class “lesion” by our MDD classifier, we define $W^m(x)$ to be the $M \times M$ local window centered at x . Within each local window $W^m(x)$, let g_{max1} and g_{min1} denote the highest and the lowest color values in $W^m(x)$, D_{maxmin} be difference between g_{max1} and g_{min1} , k_{max} and k_{min} are the weights of g_{max1} and g_{min1} respectively. g_{max2} and g_{min2} be the weighted maximum and minimum in $W^m(x)$:

$$g_{max2} = g_{max1} - \frac{D_{maxmin}}{2} * k_{max}$$

$$g_{min2} = g_{min1} + \frac{D_{maxmin}}{2} * k_{min}$$

Then the average maximum and average minimum in $W^m(x)$ are expressed as :

$$\bar{g}_{min} = \frac{1}{\sum_{g=g_{min1}}^{g_{min2}} x_g} * \sum_{g=g_{min1}}^{g_{min2}} g$$

$$\bar{g}_{max} = \frac{1}{\sum_{g=g_{max2}}^{g_{max1}} x_g} * \sum_{g=g_{max2}}^{g_{max1}} g$$

We can define a local measure D as follows:

$$D = \bar{g}_{max} - \bar{g}_{min}$$

- (1) If D is greater than a given threshold D_T , it means there is a high likelihood of having two contrasting objects within this local window. Hence, for each $W^m(x)$ whose $D \geq D_T$, if pixel x falls on the brightness range $[g_{max2}, g_{max1}]$ in the original smoothed color retinal image, it will remain classified as "lesion", otherwise x will be re-classified as "background";
- (2) If D is less than D_T in $W^m(x)$, this may mean one of the following two situations:
 - (a) $W^m(x)$ may fall on the inside region of background, in which case, pixel x should belong to background but has been wrongly classified as a lesion point by the MDD classifier. So, based on our criterion of D , x will be re-classified as "background";
 - (b) $W^m(x)$ may fall completely within a lesion patch, in which case, some true lesion point x in such windows maybe reconfirmed as a "background" point. However this will not affect our results since our focus is to detect the presence of exudates, and not the exact sizes and shapes of the exudates.

Figure 5 shows the result of applying this verification technique.

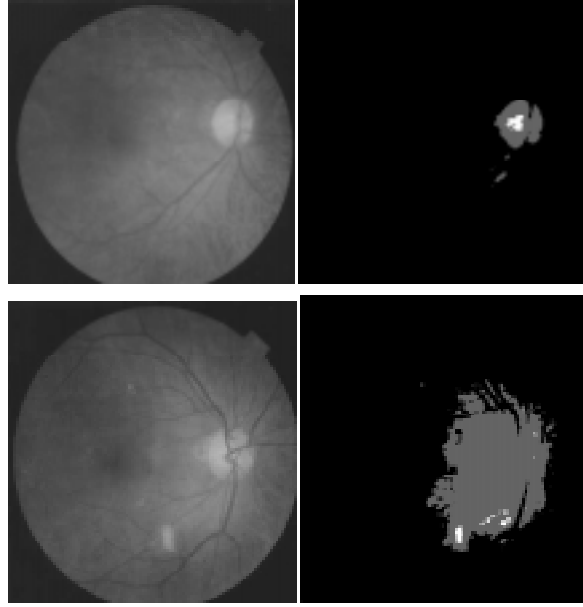
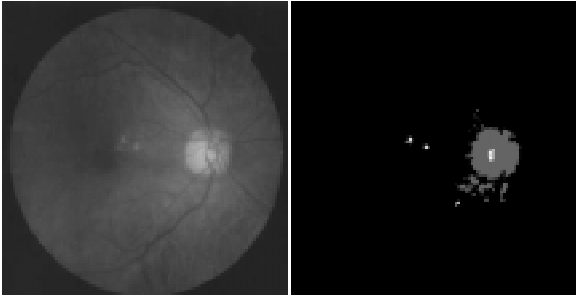


Figure 5. (Left column) Original images. (Right column) Processed images by brightness adjustment, MDD classification and lesion verification. Black points: background. Grey points: lesions preliminarily identified by MDD classifier with prior brightness adjustment. White points: final confirmed lesions after lesion verification.

5. Performance Study

We perform two sets of experiments to test the effectiveness of our proposed approach. In all the experiments, we set the parameters as follows: In the brightness adjustment procedure: we have $inmax=195, 135, 95$ and $\alpha=0.2, 0.2, 0.25$ for R, G, B planes respectively. For the verification strategy, we set the local average size to be 5×5 , the local sub-window size to be 19×19 , $k_{max}=0.75$ $k_{min}=0.5$, and the local threshold for lesion verification $D_T=15, 30, 15$ for R, G, B planes respectively

In our first experiment, the objective is to ensure that our approach will not wrongly classify an abnormal image as normal. All 54 known cases of abnormal images are used in this experiment. These images are of varying qualities. Each image is processed twice. The first time, it is processed using the MDD classifier alone (MDD). The second time, it is processed using the brightness adjustment, MDD classifier, and lesion verification method (Enhanced MDD). Table 1 shows the result using the two methods.

	Detected as Abnormal	Detected as Normal	Accuracy
MDD	36	18	66%
Enhanced MDD	54	0	100%

Table 1. Experiment Results for First Experiment.

We see that the MDD method will miss out the abnormal lesions in 18 of the images. Clearly, this is unacceptable. However, with our Enhanced MDD method, we are able to correctly identify all the abnormal lesions in all the 54 images, thus achieving 100% accuracy.

In our second experiment, we need to ensure that our method will not have too high of an error rate in classifying the truly normal images as abnormal. If the error rate is too high, it will not result in much savings for the medical professionals in terms of the number of images that still need to be manually inspected. For this experiment, 100 normal retinal images are used. The same procedure as in the first experiment is applied here. Table 2 shows the experimental results.

	Detected as Normal	Detected as Abnormal	Accuracy
MDD	78	22	78%
Enhanced MDD	70	30	70%

Table 2. Experiment Results for Second Experiment.

We see that there is a slight drop of accuracy in terms of identifying the truly normal images as normal for the Enhanced MDD method. This is because in order to ensure 100% accuracy in detecting the abnormal images, we have set very stringent conditions on any suspicious looking pixels. Thus, we will rather sound an alarm on suspicious looking pixels even though they may, in fact, just be some noise or non-lesion points in the images. As a result, the accuracy drops a little. However, this is not a major problem as we can still achieve a savings of 70% in terms of the number of images that need to be manually reviewed by medical professionals.

6. Conclusions

On the basis of color information, the presence of lesions can be preliminarily detected by using MDD classifier based on statistical pattern recognition techniques. To deal with the problem of non-uniform illumination in the retinal images, an effective pre-processing step, the brightness adjustment procedure, is proposed to ensure dim lesion patches that are scattered in

darker background would not be missed and would not be regarded as background. Finally, a local window feature D is used to verify the classification result. With this, we are able to achieve 100% accuracy in terms of identifying all the retinal images with lesions while maintaining a 70% accuracy in correctly classifying the truly normal retinal images as normal. This translates to a huge amount of savings in terms of the number of retinal images that need to be manually reviewed by the medical professionals each year.

References

- [1] Lim K. H., "Registration of New Blindness in Singapore for 1985-1995", Singapore Medical Journal, Vol.40, No.2, Feb. 1999.
- [2] Leistriz, Dietrich Schweitzer, "Automated Detection and Quantification of Exudates in Retinal Images", SPIE, Vol.2298, 1994.
- [3] Nicholas P. Ward, Stephen Tomlinson, et al., "Image Analysis of Fundus Photographs", Ophthalmology, Vol.96, No.1, Jan. 1989.
- [4] R. P. Philips, T. Spencer, et al., "Quantification of Diabetic Maculopathy by Digital Imaging of the Fundus", Eye, Vol.5, 130-137, 1991.
- [5] Ressel Philips, John Forrester, et al., "Automated Detection and Quantification of Retinal Exudates", Graefe's Archive for Clinical & Experimental Ophthalmology, Vol.231, 90-94, 1993.
- [6] Tzay Y. Young, Thomas W. Calvert, "Classification, Estimation, and Pattern Recognition", New York, American Elsevier Pub. Co., 1974
- [7] Boris Mirkin, "Mathematical Classification and Clustering", Kluwer Academic Publishers, 1996
- [8] J. K. Kasson, W. Pluffe, "An Analysis of Selected Computer Interchange Color Space", ACM Trans. Graphics, Vol.11, 373-405, 1992
- [9] Norman Katz, Michael Goldbaum, et al., "An Image Processing System for Automatic Retina Diagnosis", SPIE, Vol.902, 1988.
- [10] Michael Goldbaum, Norman Katz, et al., "The Discrimination of Similar Colored Objects in Computer Images of the Ocular Fundus", Investigative Ophthalmology & Visual Science, Vol.31, No.4, Apr. 1990.
- [11] Goh KG, Hsu W, Lee ML, "Automatic Diabetic Retinal Image Screening Using Image Processing and Machine Learning Algorithms" Medical Imaging 2000, SPIE, Feb 2000, California, USA.