



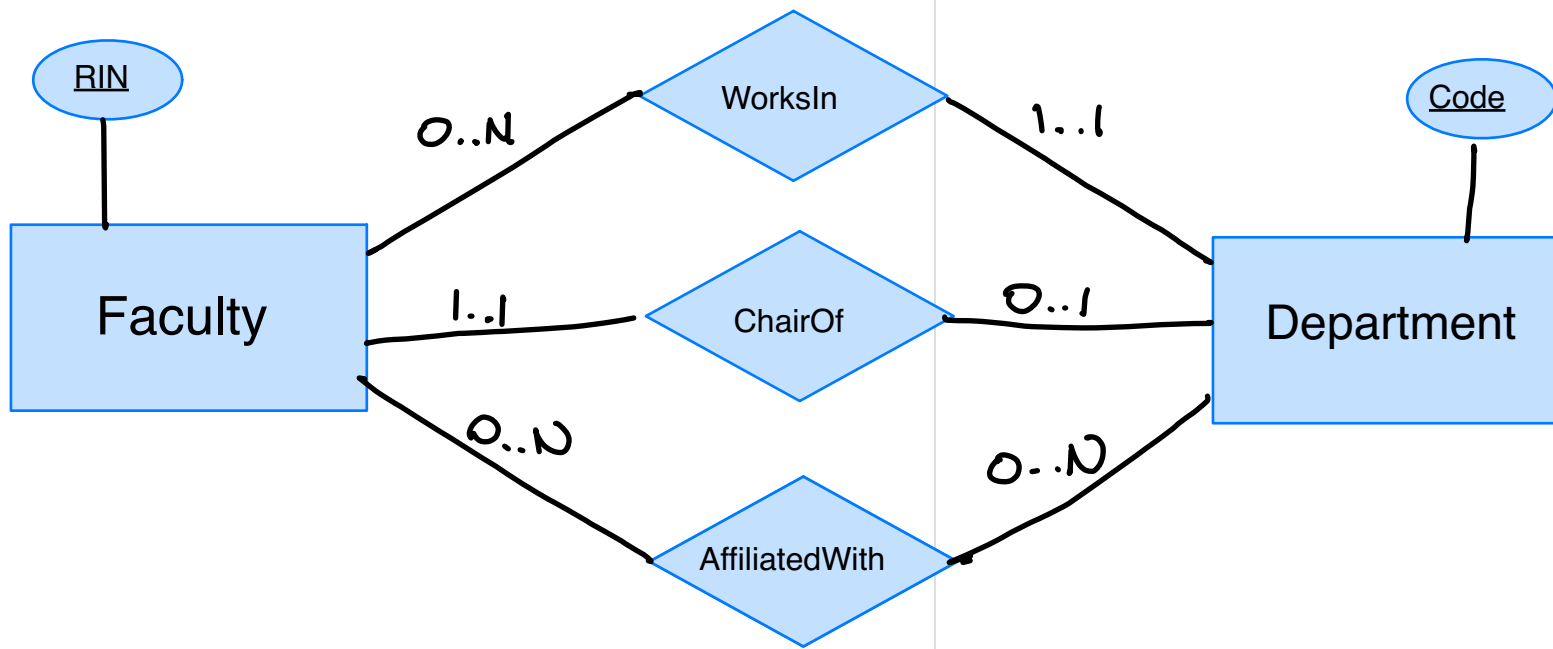
CSCI 4380 - Database Systems

Fall 2020

Lecture 7:2:

Entity Relationship Diagrams

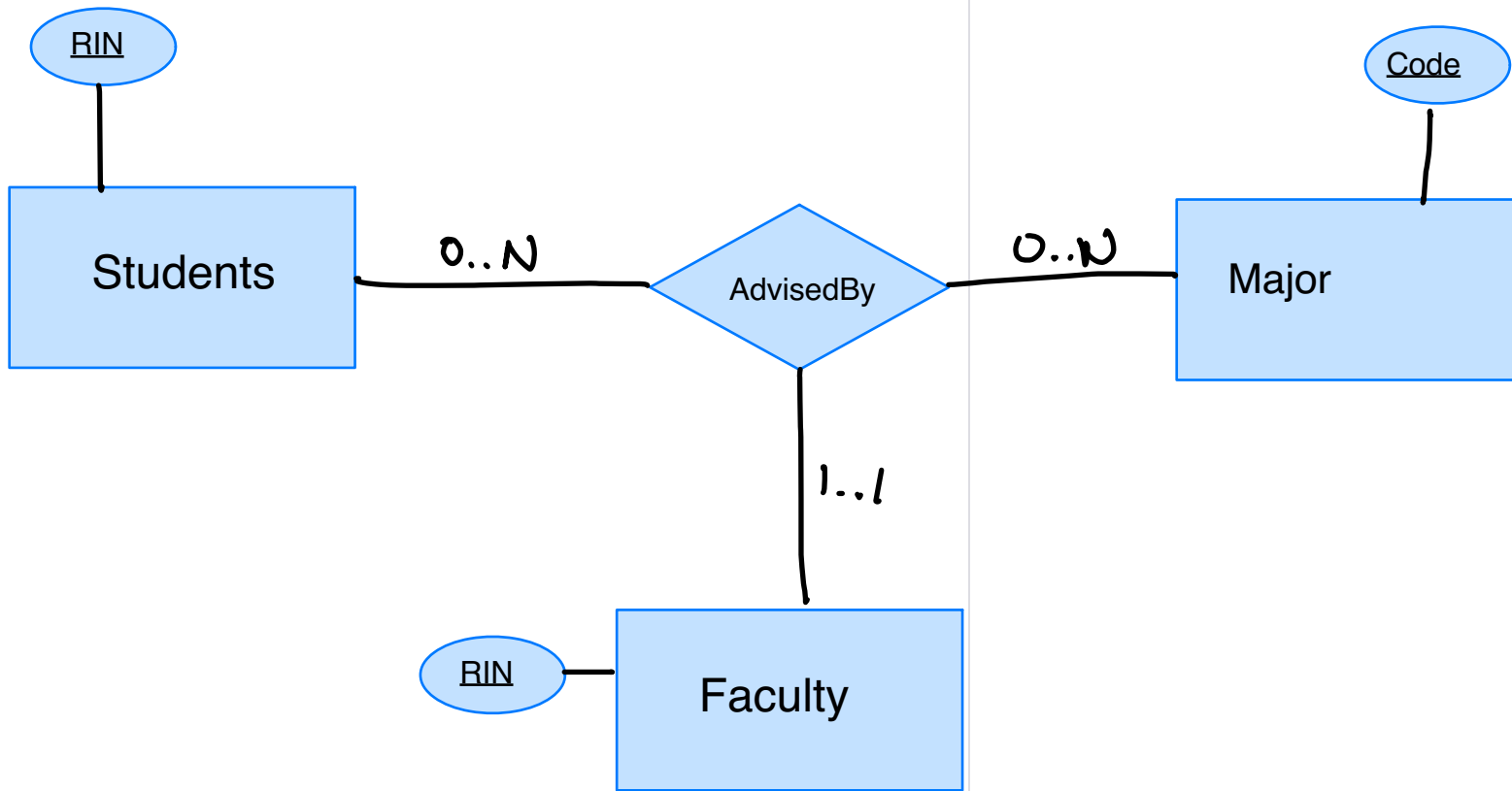
More on participation constraints



Faculty -> DepartmentTheyWorkIn

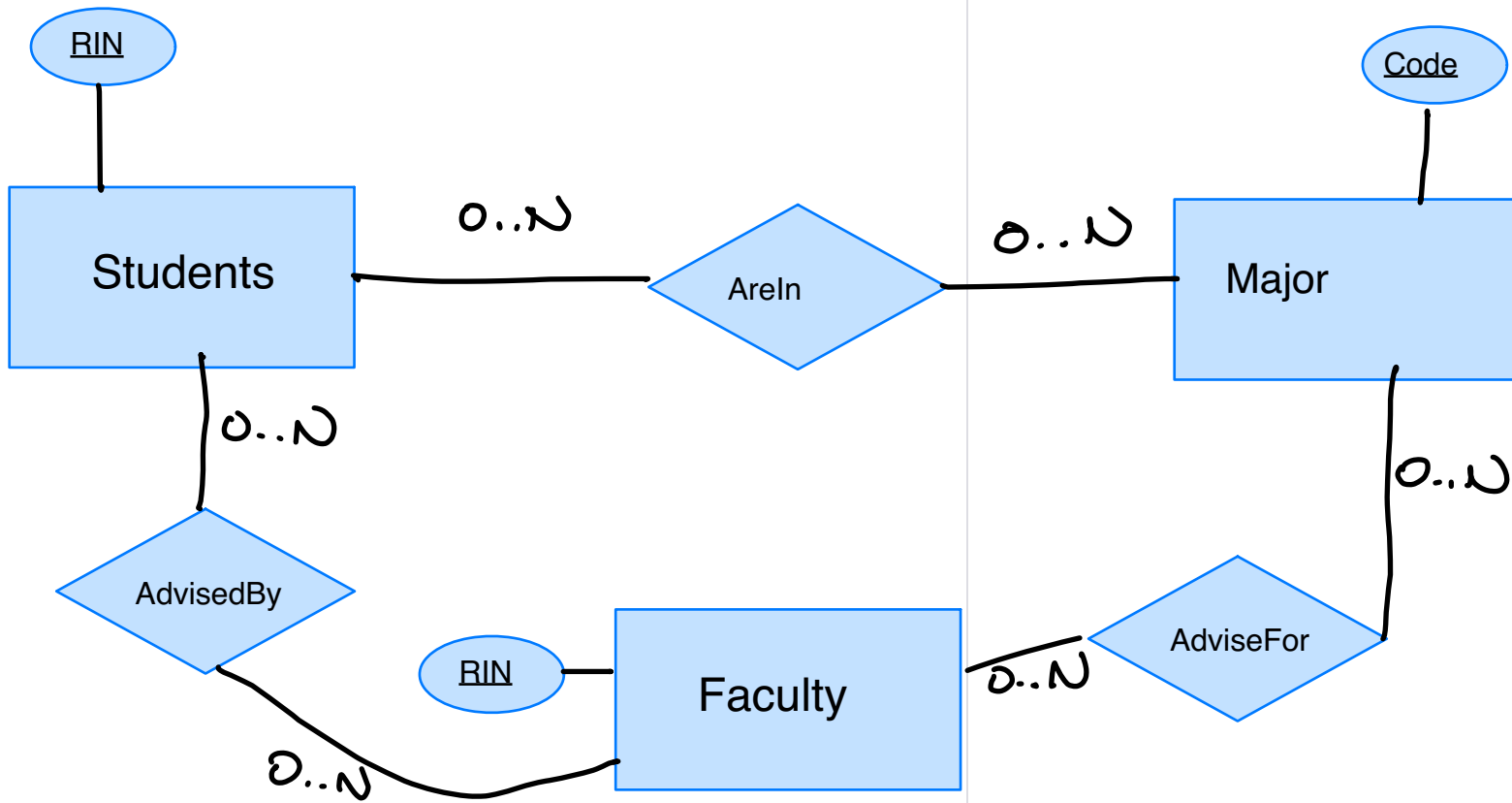
Faculty -> DepartmentTheyAreChairOf

Department -> FacultyWholsChair

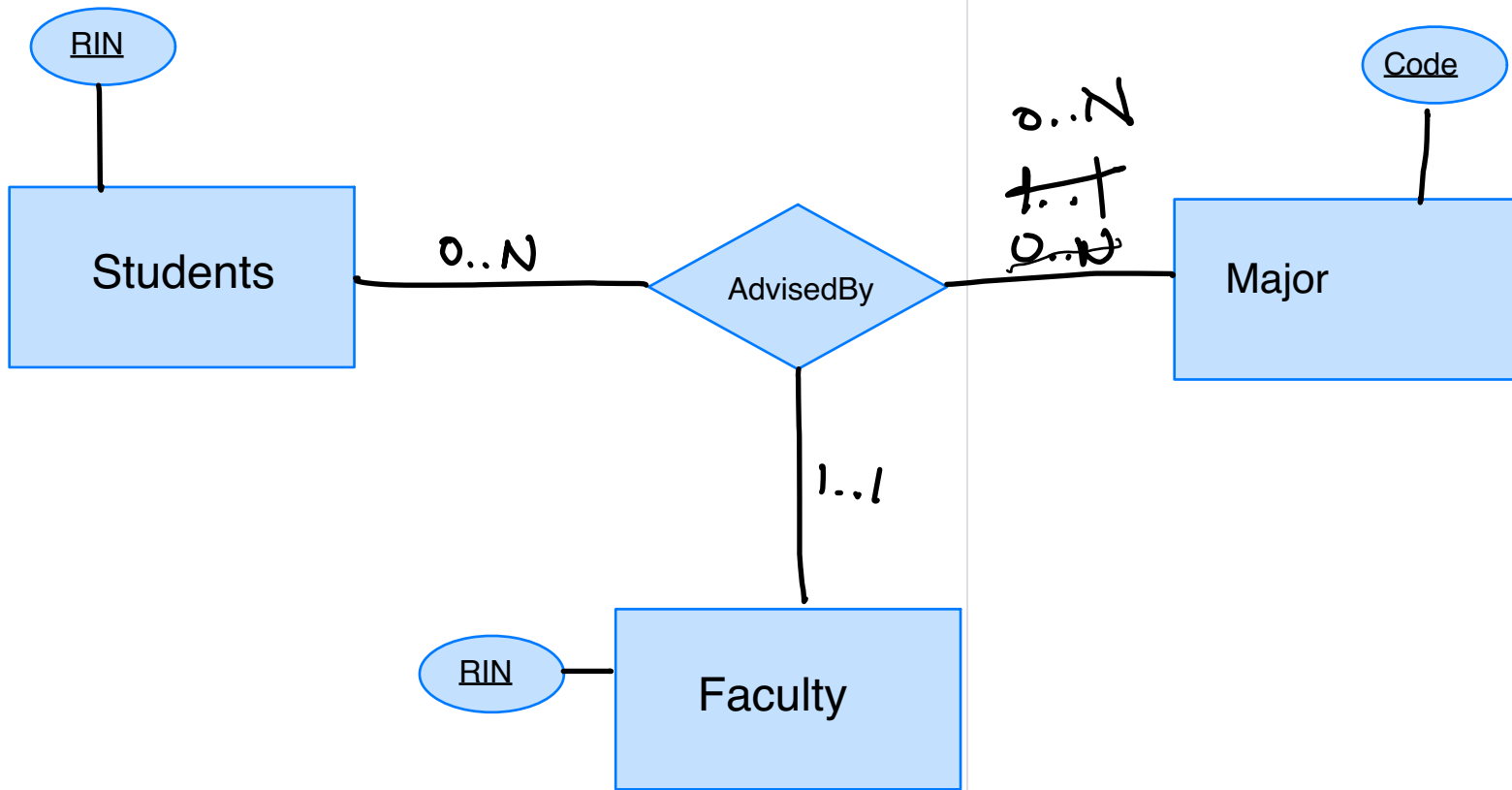


In this model, we are assuming a faculty can advise for multiple majors, but given a major and a student, there is a single faculty.

Students Major -> Faculty



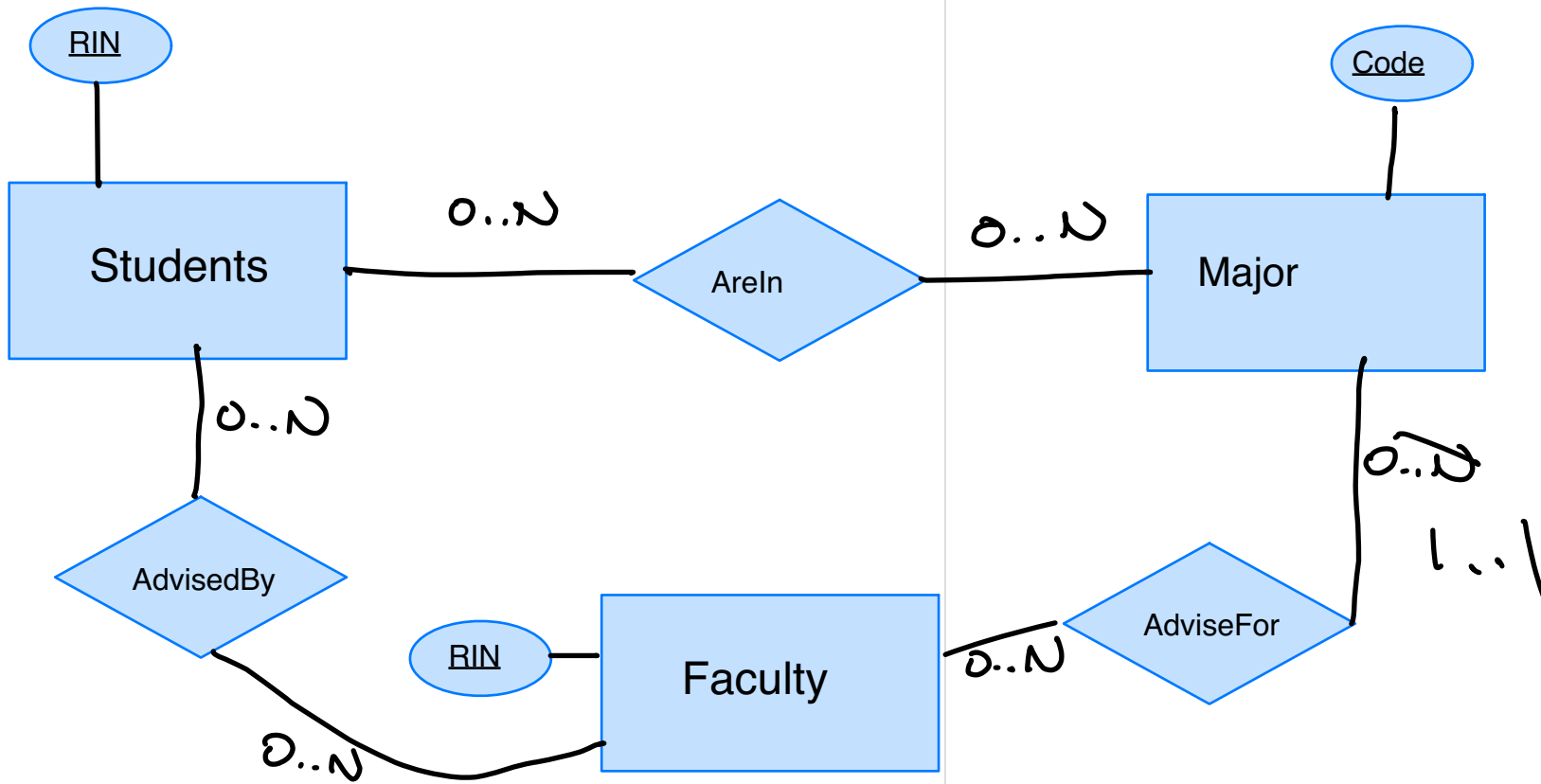
Students Major -> Faculty



Consider an alternate reality: a faculty can advise only for a single major!

Students Major -> Faculty

Faculty -> Major



Students Major -> Faculty
 Faculty -> Major

